

A young girl with dark hair, wearing a patterned shirt with cartoon characters and dark pants, is smiling and holding a pink string attached to a wooden post. The background shows a wooden structure and a blue net.

# ENDING AIDS, TB AND MALARIA AS EPIDEMICS



# A SMART INVESTMENT

In 2000, AIDS, tuberculosis and malaria appeared to be unstoppable. In many countries, AIDS devastated an entire generation, leaving countless orphans and shattered communities. Malaria killed young children and pregnant women unable to protect themselves from mosquitoes or access life-saving medicine. Tuberculosis unfairly afflicted the poor, as it had for millennia.

The world fought back. As a partnership of governments, the private sector, civil society and people affected by the diseases, the Global Fund pooled the world's resources to invest strategically in programs to end AIDS, TB and malaria as epidemics.

**It is working.**

# RESULTS THAT MATTER

Smart, effective health investments through the Global Fund have saved 22 million lives, expanding opportunities and achieving greater social justice for families and communities worldwide.

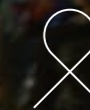
Scientific advances, innovative ideas and private sector savvy are unlocking improvements in disease prevention, treatment and care. Millions of people are now on antiretroviral therapy and spared the death sentence that used to come with HIV. The number of people dying of malaria, most of them young children, has been cut in half. New diagnostics systems are speeding up the testing and treatment of people with TB.

But we can't stop now. Adolescent girls are contracting HIV at a terrible rate in southern Africa. Multidrug-resistant TB is growing into a potentially catastrophic threat to public health. Gains made against malaria could be lost if we don't expand prevention and treatment programs.

Millions more lives are still at risk. We must seize the momentum, be ambitious and move faster to end HIV, TB and malaria as epidemics.



**22**  
**MILLION**  
**LIVES**  
**SAVED**



**11**  
**MILLION**

people on antiretroviral therapy for HIV



**17.4**  
**MILLION**

people tested and treated for tuberculosis



**795**  
**MILLION**

mosquito nets distributed to protect children and families from malaria

# A 21<sup>ST</sup>-CENTURY PARTNERSHIP

The Global Fund's partnership model is designed to promote innovative solutions. With a 21st-century approach that encourages agile responses and maximum participation, countries take the lead in determining where and how to best fight diseases. Collectively, we harness the best possible experience, insights and innovation in the public and private sectors, from faster delivery of essential medicines to more effective methods to reach the people most in need. The Global Fund's operating costs are approximately 2 percent of grants under management, reflecting an exceptionally high degree of efficiency.



## HOW IT WORKS

### OVERSIGHT IN ACTION

Ongoing financing depends upon performance and proven results. Local Fund Agents in each country monitor implementation of grants. The Global Fund's Office of the Inspector General conducts audits and investigations.

### WE EVALUATE

An independent panel of experts reviews the plan to determine if it will achieve results. The panel may request changes to the plan. Once finalized, it goes to the Global Fund's board for approval.

### WE RAISE THE MONEY

The Global Fund raises and invests nearly US\$4 billion a year to support programs run by local experts in more than 100 countries. The money comes 95 percent from donor governments and 5 percent from the private sector and foundations.

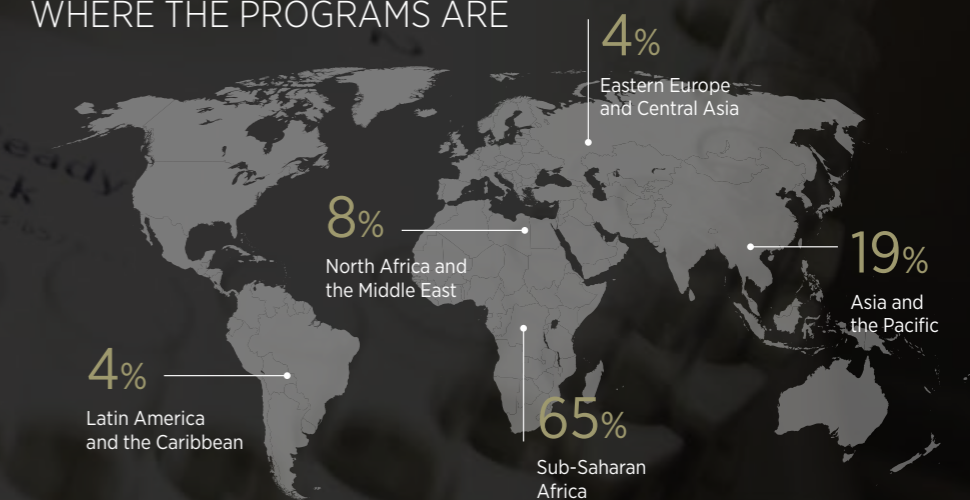
### COUNTRIES MAKE INVESTMENT DECISIONS

A Country Coordinating Mechanism made up of people whose lives are affected by the three diseases, medical experts, government and civil society meets and develops a plan to fight the diseases in their community.

### LOCAL EXPERTS IMPLEMENT

Countries take the lead in determining where and how best to fight diseases. Local experts and partners use grant money to deliver programs.

## WHERE THE PROGRAMS ARE





The Global Fund / Alexia Webster

# HEALTH AND HUMAN RIGHTS

Ending HIV, TB and malaria as epidemics will only work by making health care accessible, affordable and effective, particularly for vulnerable people who are often denied access due to stigma and discrimination, ability to pay or distance from a health center. The Global Fund partnership supports countries to remove human rights barriers to health, and to protect and promote human rights in all Global Fund-supported programs.

# ADOLESCENT GIRLS AND YOUNG WOMEN

In many countries, HIV is the leading cause of death of women of reproductive age. In some, girls account for more than 80 percent of all new HIV infections among adolescents. The Global Fund invests in programs that specifically target the needs of women and girls, and works to break down gender inequalities that are major drivers of the spread of infectious diseases.

In areas where girls and young women are disproportionately affected by HIV, the Global Fund invests in comprehensive prevention activities and addresses the gender norms that drive violence, keep girls out of school, or block them from accessing health services.

# STRONGER HEALTH SYSTEMS

Building resilient and sustainable systems for health is essential for making progress against HIV, TB and malaria, improving health care for all, and helping countries prepare for emerging global health security threats.

The Global Fund increasingly provides HIV, TB and malaria prevention and treatment programs through community health facilities that provide a range of integrated services, from maternal health to childhood vaccinations to basic health care. As a result, overall health outcomes are stronger, more cost-effective and efficient.

# A SHARED RESPONSIBILITY

Efforts by partners in global health are making a transformational difference in the lives of the millions of people affected by HIV, TB and malaria. As countries develop, their increased contributions to fighting the three diseases and improving health care systems are accelerating the end of the epidemics and helping create safer, more stable communities.

**Global health is a shared responsibility. Together, we can end the epidemics – for good.**





**The Global Fund to Fight  
AIDS, Tuberculosis and Malaria**

Chemin de Blandonnet 8  
1214 Vernier  
Geneva, Switzerland

T +41 58 791 1700

[www.theglobalfund.org](http://www.theglobalfund.org)

 theglobalfund  
 @GlobalFund  
 theglobalfund

October 2017