

# Quick Planning and Reference Guides 2020-2022 Allocation Period

## TABLE OF CONTENTS

JUNE 2020

### 1. Quick Planning Guide

- [Window 1](#)
- [Window 2a](#)
- [Window 2b](#)
- [Window 2c](#)

### 2. Quick Reference Guide ([link](#))

# W1 GRANT-MAKING – QUICK PLANNING GUIDE

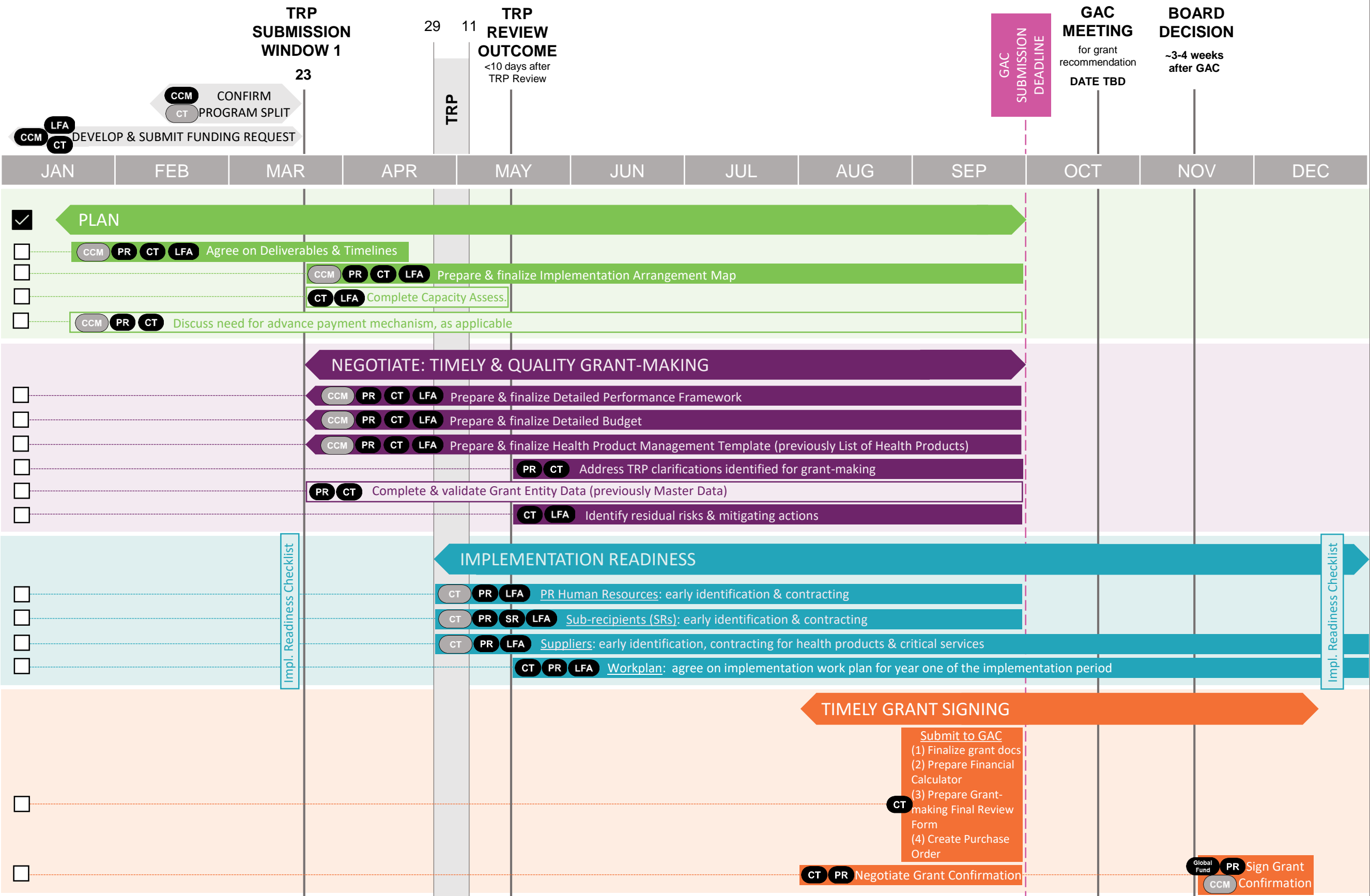
(for new grants submitting to TRP W1 and starting new IP in January 2021)

2020

2021

## ONGOING GRANT IMPLEMENTATION (Y3 OF IP)

NEW IP



All stakeholders in a gray icon ( ) are involved in the respective step through an oversight capacity.

# W2a GRANT-MAKING – QUICK PLANNING GUIDE

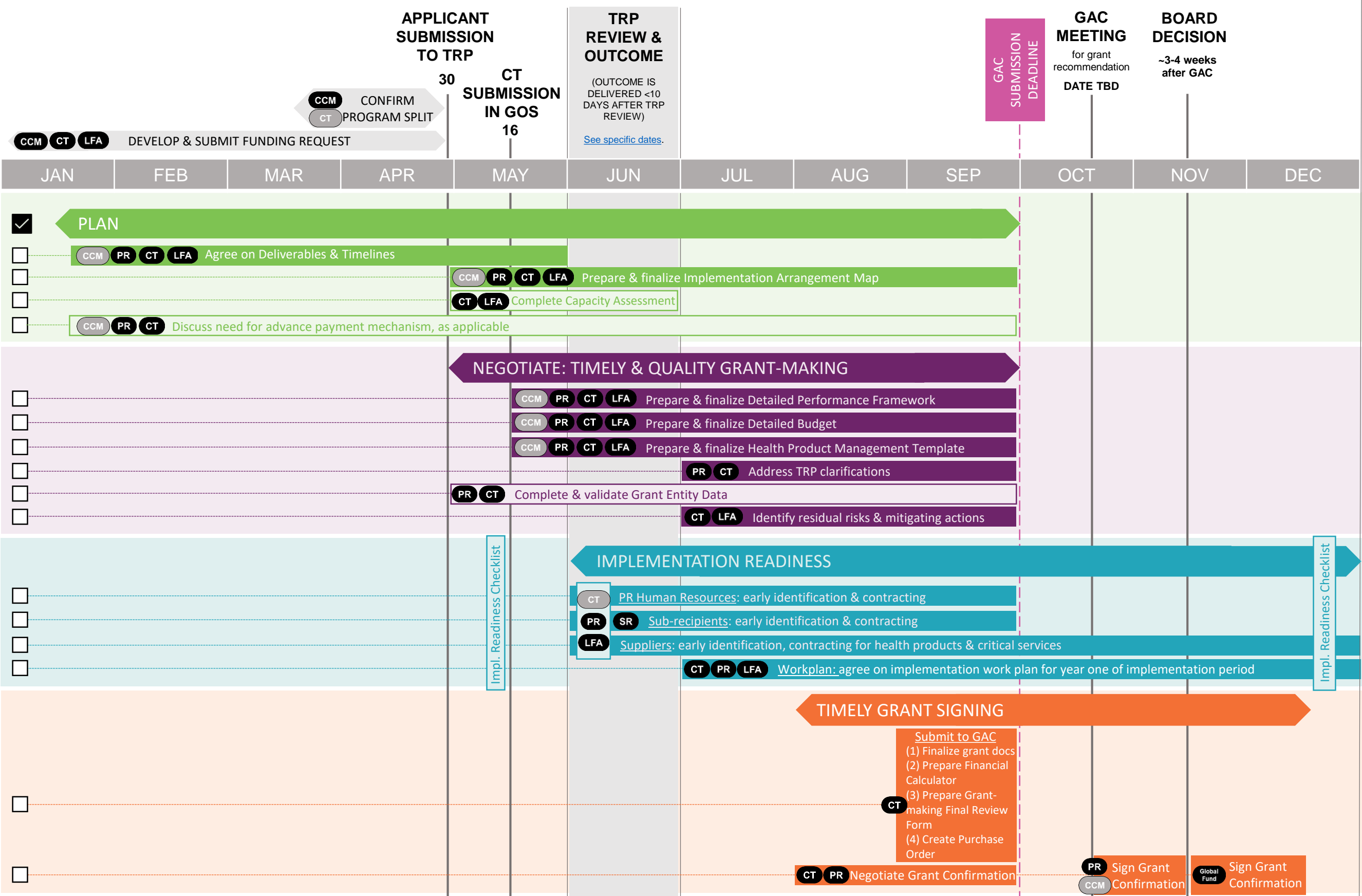
(for new grants submitting to TRP W2a and starting new IP in January 2021)

2020

2021

## ONGOING GRANT IMPLEMENTATION (Y3 OF IP)

NEW IP



All stakeholders in a gray icon ( ) are involved in the respective step through an oversight capacity.

# W2b GRANT-MAKING – QUICK PLANNING GUIDE

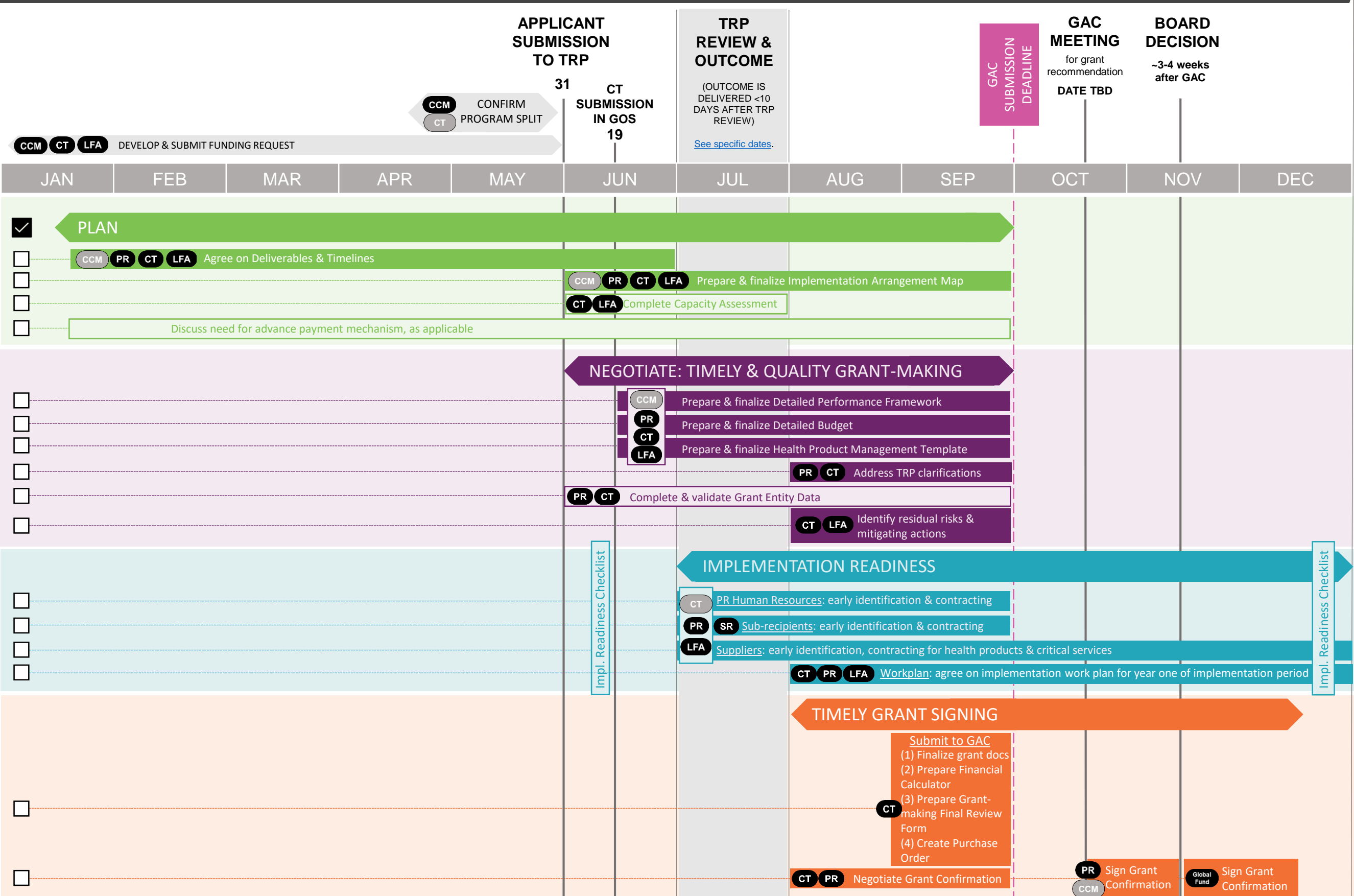
(for new grants submitting to TRP W2b and starting new IP in January 2021)

2020

2021

ONGOING GRANT IMPLEMENTATION (Y3 OF IP)

NEW IP



All stakeholders in a gray icon ( ) are involved in the respective step through an oversight capacity.

# W2c GRANT-MAKING – QUICK PLANNING GUIDE

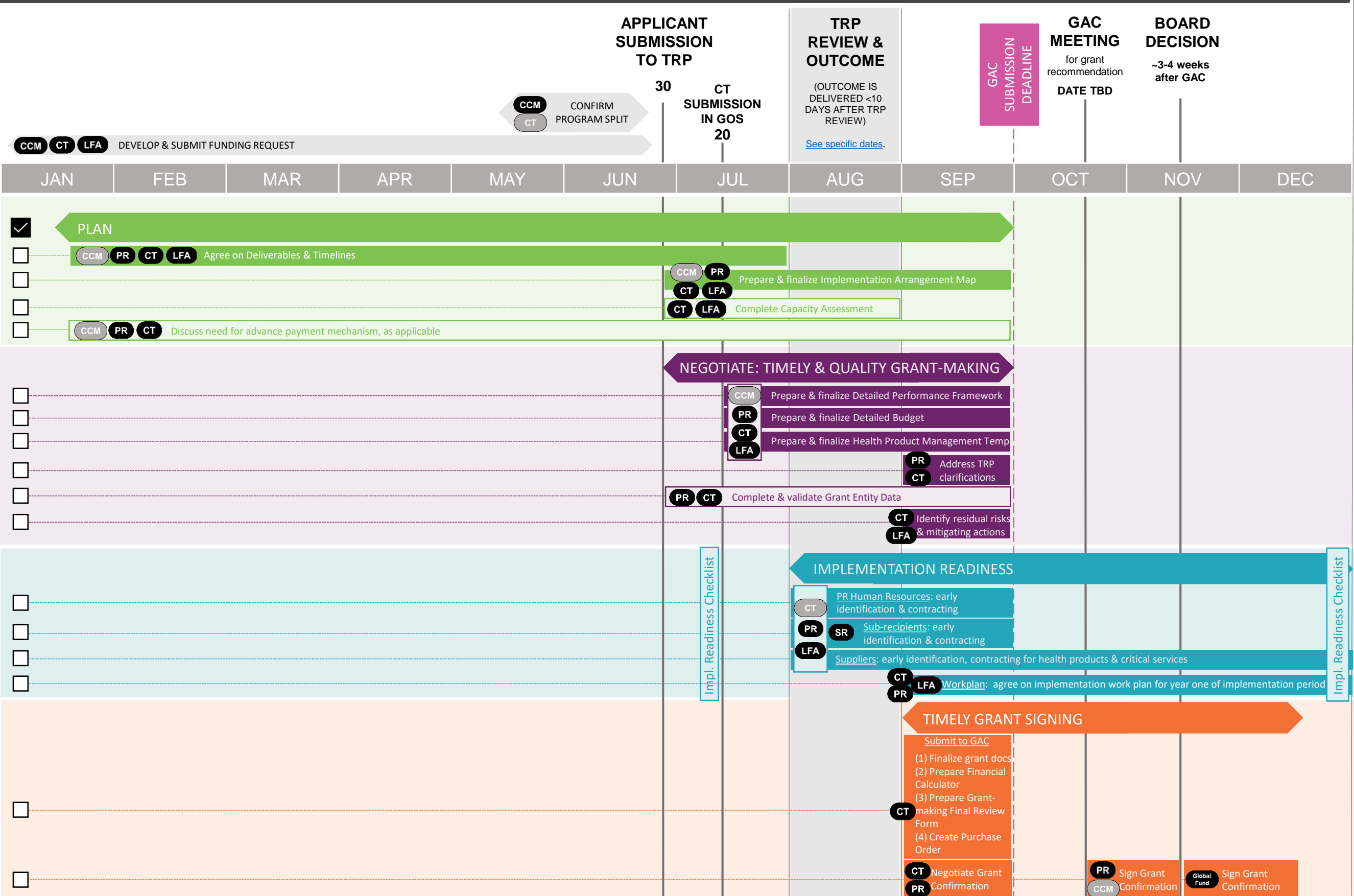
(for new grants submitting to TRP W2c and starting new IP in January 2021)

2020

2021

## ONGOING GRANT IMPLEMENTATION (Y3 OF IP)

NEW IP



All stakeholders in a gray icon ( ) are involved in the respective step through an oversight capacity.

# GRANT-MAKING – QUICK REFERENCE GUIDE

2020 – 2022 ALLOCATION PERIOD

EARLY PLANNING					QUALITY GRANT-MAKING	TIMELY GRANT CONFIRMATION	
	Capacity Assessment	Implementation Arrangements Map	Performance Framework	Detailed Budget	Health Product Management Template (previously List of Health Products)	Grant Entity Data (previously Master Data)	Grant Confirmation
<b>Templates</b>	Global Fund generated Excel template	Sample template in guidelines	Global Fund generated Excel template	Global Fund generated Excel template	<b>New!</b> Global Fund Excel template <a href="#">Health Product Management Template: HIV</a> <a href="#">Health Product Management Template: TB</a> <a href="#">Health Product Management Template: Malaria</a>	<a href="#">Partner Portal</a>	Global Fund generated Word template
<b>Stakeholder responsible</b>	<b>CT and LFA</b> to assess the capacity of Principal Recipients.  <b>CCM</b> to be informed of results.	<b>PR</b> to complete with consultation with <b>CCM</b> .  <b>PR</b> to negotiate with CT.  <b>LFA</b> to review as requested by CT.  <b>CT</b> to submit final version to GAC.	<b>CT</b> to generate Performance Framework template.  <b>PR</b> to complete and negotiate with CT.  <b>CCM</b> to oversee timelines and quality.  <b>LFA</b> to review as requested by CT.  <b>CT</b> to review and submit to GAC.	<b>CT</b> to generate Budget template.  <b>PR</b> to complete and negotiate with CT.  <b>CCM</b> to oversee timelines and quality.  <b>LFA</b> to review as requested by CT.  <b>CT</b> to review and submit to GAC.	<b>CT</b> to generate Health Product Management Template.  <b>PR</b> to complete and negotiate with CT.  <b>CCM</b> to oversee timelines and quality.  <b>LFA</b> to review as requested by CT.  <b>CT</b> to review and submit to GAC.	<b>CCM</b> to enter and submit information via Partner Portal.  <b>PR</b> to enter and submit information via the Partner Portal.  <b>Global Fund</b> to review and validate the information.	<b>CT and PR</b> to negotiate grant requirements.  <b>Global Fund Secretariat</b> and <b>PR</b> to sign grant confirmation upon Board approval.  <b>CCM</b> to endorse the grant confirmation through signature.
<b>Guidance</b>	<a href="#">OPN on Risk Management</a>	<a href="#">Implementation Arrangements Mapping Guidelines</a>	<a href="#">Global Fund website - grant-making</a>	<a href="#">Global Fund website - grant-making</a>  <a href="#">Detailed budget template instructions</a>	<a href="#">HPMT User Guidelines</a>	<a href="#">Global Fund website - grant-making</a>	<a href="#">OPN on Grant Signing and Amendments</a>
For details of LFA involvement, refer to relevant <a href="#">LFA guidance</a>							